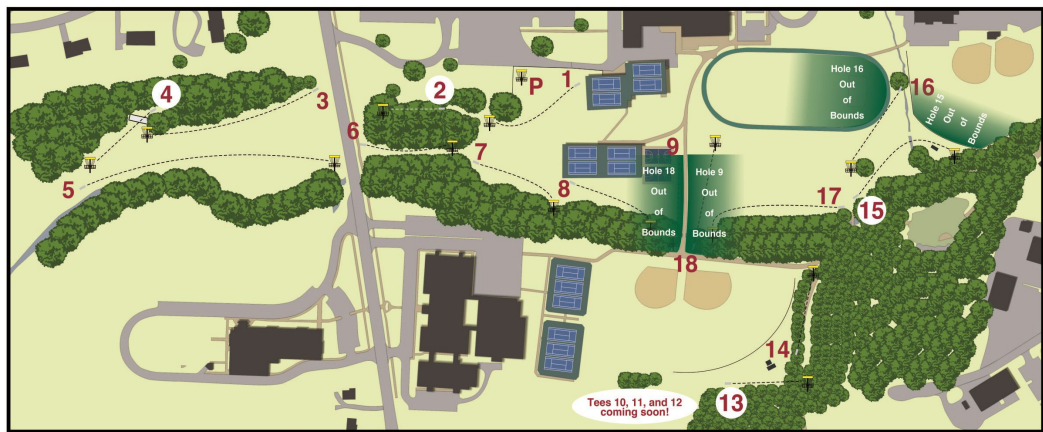




COURSE
MAP

Disc Golf Course



INFORMATION
AND RULES

WARNING

Do not throw discs while folks are on the sidewalk or between you and the basket.
NO EXCEPTIONS!
PLAY AT YOUR OWN RISK

GENERAL INFORMATION

Destroying vegetation and trees is against official disc golf rules of play and the spirit of the game. You may be evicted from the course for not protecting vegetation.

Please respect users of the tennis courts and ball fields. They have priority.

If you find a lost disk, please return it to the Hulsey Wellness Center front desk.

Discs are sold at the Hulsey Wellness Center.

Alcohol, smoking, and drugs are prohibited on all University property.

Remember to watch for vehicles and pedestrians at road crossings.

For more information regarding the Southern Adventist University Disc Golf course, please call 423.236.2850

ABOUT DISC GOLF

Disc Golf is played like ball golf, but with a flying disc. One point is counted each time the disc is thrown and when a penalty is incurred. The objective is to acquire the lowest score.

PLAYING THE GAME

Never throw until the players ahead of you are out of range. Tee throws must be made within or behind the designated areas.

After teeing off, the player whose disc is farthest from the hole always throws first. The player with the least amount of throws on the previous hole is first to tee off on the next hole.

A run-up and normal follow-through after release is allowed more than ten meters from the hole. Inside ten meters, a player may not step past the point of their line until after the thrown disc lands.

OUT OF BOUNDS

Any disc that comes to rest more than two meters above the ground is considered out of bounds. The next throw must be taken from directly below the disc and the player receives a one stroke penalty.

A disc that is thrown out of bounds (on the sidewalk, track, in courts, or water) must be thrown from the point where the disc went out of bounds.

HOLE COMPLETION

A disc that comes to rest inside the basket or chains constitutes successful completion of that hole.

A disc that comes to rest on top of the basket does not constitute successful completion of that hole.